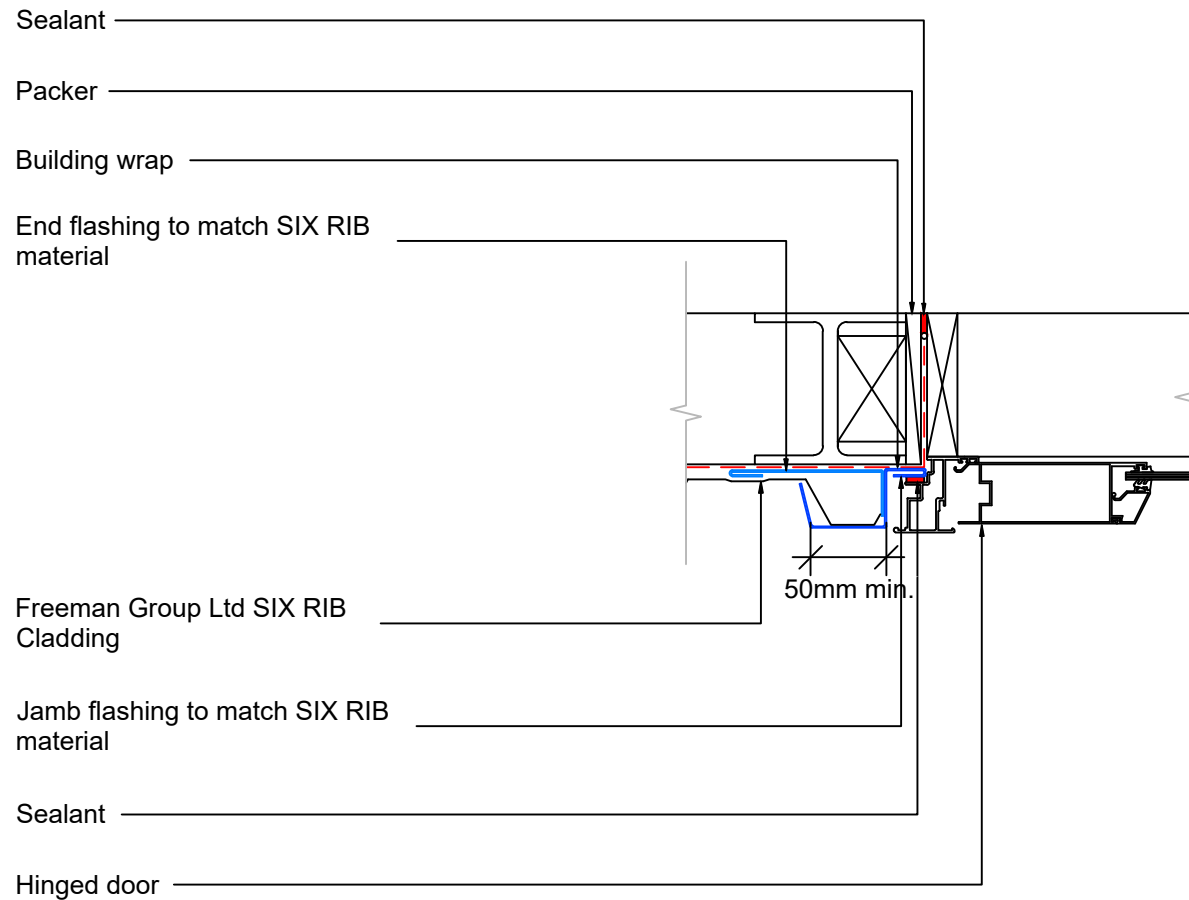


SIX RIB material	
0.55mm	Colorsteel® Endura
0.55mm	Colorsteel® Maxx
0.55mm	Zincalume



Notes:
 These details are required to be fixed to allow thermal movement .
 Foam closure is required in high wind region to mitigate driving rain migration.
 Foam closure is required to protect from vermin and avian damage.